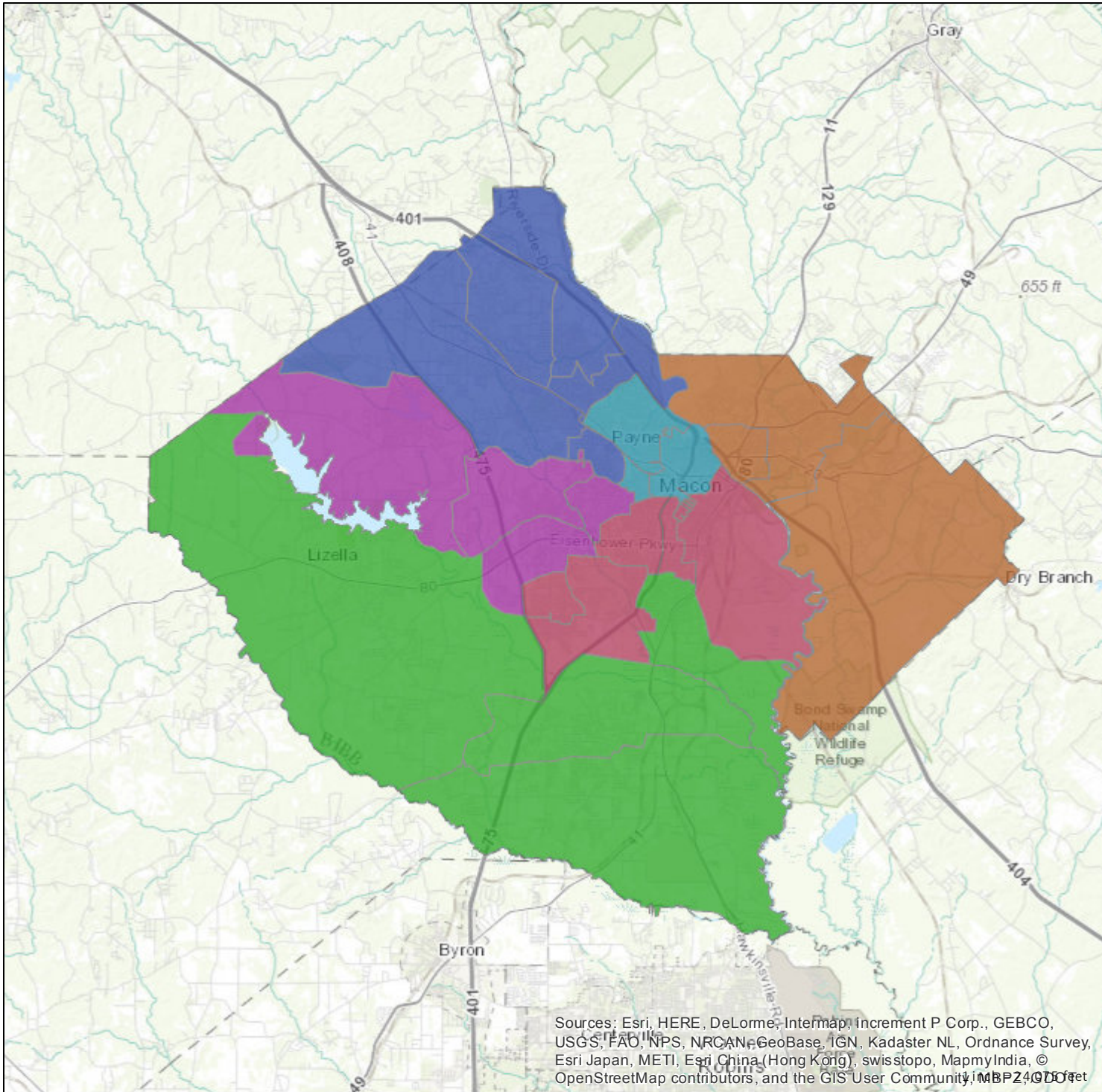


Middle School Zones



Legend

- Applying Middle School
- Ballard-Hudson Middle School
- Howard Middle School
- Miller Middle School
- Rutland Middle School
- Weaver Middle School

Map Maker: Web AppBuilder for ArcGIS

The Macon-Bibb County's infrastructure records, drawings, and other documents have been gathered over many years, using differing standards for quality control, documentation, and verification. All of the data provided represents current information in a readily available format. While the data provided is generally believed to be accurate, occasionally it proves to be incorrect; thus its accuracy is not warranted. Prior to making any property purchases or other investments based in full or in part upon the material provided, it is specifically advised that you independently field verify the information contained within our records. Date: 1/12/2017

Sources: Esri, HERE, DeLorme, Intermap, increment P Corp., GEBCO, USGS, FAO, NPS, NRCAN, GeoBase, IGN, Kadaster NL, Ordnance Survey, Esri Japan, METI, Esri China (Hong Kong), swisstopo, MapmyIndia, © OpenStreetMap contributors, and the GIS User Community.

